

日本鹿儿岛实证数据出炉！ TOPCon对比N型BC组件的长期发电增益8.82%

TÜV
N TOPCon 2024 10
2024 12
N BC
9.84%
8.82%

1. 2024 10 2024 12
TOPCon
10 15 10 29 15
9.13%

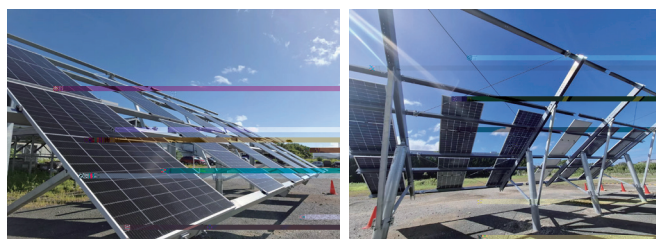
2. TOPCon 80%

TOPCon

3. 2km
TOPCon

项目背景:

N TOPCon
XBC
XBC
TOPCon XBC
TOPCon



项目介绍:

32°3'57" 130°19'53"
N TOPCon N
BC 2
1.2
SAT
CR1000X

	尺寸
N-type TOPCon	2278x1134x30
N-type BC	2278x1134x30

测试结果:

2024 10 1 12 31
TOPCon
294.2 kWh/kW N BC 270.2
kWh/kW TOPCon
8.82%

	FAB5a ⁺	@ 45°	效率
10	100.6	91.9	9.46%
11	93.2	86.9	7.17%
12	100.4	91.4	9.84%

1000W/m² N
TOPCon 8.05%
1000W/m² TOPCon 174.04kWh
N BC 8.10%

TOPCon

PR

TOPCon PR 97.8% N
BC PR 89.9% TOPCon

TOPCon VS N型BC 单瓦发电量对比

